



Shifter Yokes, Shifter Shoes & Studs (MMS, MMD, MOR & ORI)

ADVANTAGES

- Standard shifter assemblies available for all sizes of mechanical multiple disc clutches and brakes
- Available in sizes 21 through 28
- Compatible with Carlyle Johnson mechanical clutches and brakes

OPERATION

- Replaceable shoes and studs
- Shifter shoes and studs available separately for customer fabrication applications
- Shifter shoes are adaptable to any operational speed

CUSTOMIZATION

- Custom designs available
- Optional base available

Compatible with CJM Mechanical Clutches & Brakes



Carlyle Johnson offers a line of shifter yoke assemblies, shoes and shoe studs, all of which are compatible with CJM mechanical clutch and brake products. These units can also be purchased if you wish to build or service your own power transmission actuation system.

Since the clutch or brake is usually the key element in these packages, Carlyle Johnson is the logical choice and single source for the total package. If you aren't certain which models are right for you please contact our sales staff. We have extensive experience solving unique power transmission problems, especially in situations that require high torque and when space and weight are concerns.

CJM can also supply housings, gears, shafts and transmission elements as well as clutches, brakes and total transmission packages. We offer self-contained MAXITORQ® Disc Pacs. These disc pac come with our separator spring design which prevents drag, abrasion and the consequential heat build-up in neutral that is associated with conventional units.



CARLYLE JOHNSON

www.cjmco.com

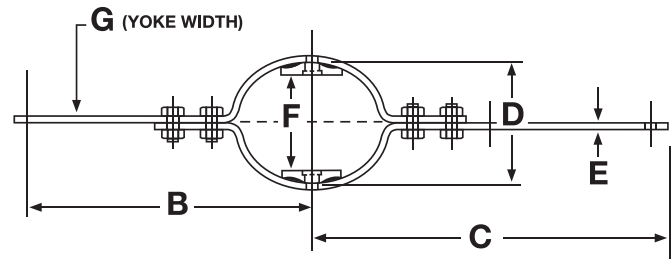
291 Boston Turnpike, Bolton, CT 06043
Main Phone: 860-643-1531 • FAX: 860-646-2645

Specifications of Standard Shifter Yokes, Shoes and Studs

Our shifter yoke assemblies are available in sizes 21 through 28 and are shipped complete with shoes and studs. Shoes and studs are also available to purchase separately for installation into customer's shifter yokes. A complete shifter yoke assembly is shown with a MAXITORQ® Multiple Disc Manual Double Clutch on the cover.

Model	B	C	D	E	F	G
MMS0021-150	7	7 3/8	2 27/32	3/16	2 7/32	3/4
MMS0022-150	8 7/8	9 3/8	3 5/16	1/4	2 11/16	1
MMS0023-150	10 1/2	11 1/8	4 5/16	5/16	3 11/32	1 1/4
MMS0024-150	10 1/2	11 1/8	4 1/2	5/16	3 21/32	1 1/4
MMS0025-150	10 1/2	16 1/4	5 5/16	3/8	4 1/8	1 1/2
MMS0026-150	10 1/2	17 1/4	6 13/16	3/8	4 3/4	1 3/4
MMS0027-150	11 7/8	20	8 3/4	1/2	6 9/16	2 1/4
MMS0028-150	11 7/8	20	8 3/4	1/2	7 9/16	2 1/4

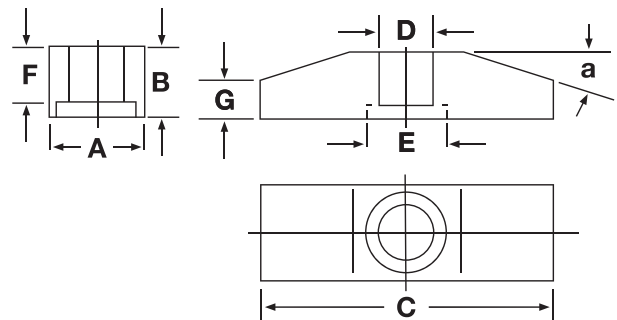
Shifter Yoke Assembly



All dimensions are measured in inches.

Model	A	B	C	D	E	F	G	Angle a
MMS0021-117	.497	5/16	1 3/8	.313	13/32	.250	3/16	16°
MMS0022-117	.497	5/16	1 3/8	.313	13/32	.250	3/16	16°
MMS0023-117	.622	27/64	2	.375	17/32	.297	7/32	17°
MMS0024-117	.622	27/64	2	.375	17/32	.297	7/32	17°
MMS0025-117	.747	19/32	2 7/16	.438	5/8	.422	5/16	21°
MMS0026-117	.747	19/32	2 7/16	.438	5/8	.422	5/16	21°
MMS0027-117	.809	19/32	2 7/16	.438	5/8	.422	5/16	21°
MMS0028-117	.809	19/32	2 7/16	.438	5/8	.422	5/16	21°

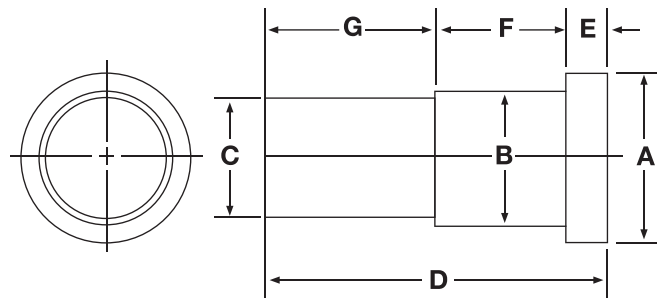
Shifter Shoes



All dimensions are measured in inches.

Model	A	B	C	D	E	F	G
MMS0021-118	3/8	.310	.250	5/8	.046	.265	.312
MMS0022-118	3/8	.310	.250	5/8	.046	.265	.312
MMS0023-118	1/2	.373	.312	25/32	.094	.312	.375
MMS0024-118	1/2	.373	.312	25/32	.094	.312	.375
MMS0025-118	9/16	.436	.375	1 1/8	.125	.437	.563
MMS0026-118	9/16	.436	.375	1 1/8	.125	.437	.563
MMS0027-118	9/16	.436	.375	1 1/8	.125	.437	.563
MMS0028-118	9/16	.436	.375	1 1/8	.125	.437	.563

Shifter Shoe Studs



All dimensions are measured in inches.

